



# WOLF E-NEWS

*from Westside High School*

14201 Briar Forest Houston, Texas 77077 \* Phone: 281.920.8000 \* Fax: 281.920.8059

April 7, 2020

## We Can Do This, Wolves!

A Letter from Principal Stewart

Dear Westside Students and Families,

We are not only in this together, we need each other! There is no better way to start this letter than by expressing appreciation and gratitude for the support and positive encouragement from our families. As the saying goes, "If you build it, they will come." Each day since March 31<sup>st</sup>, there are approximately 2500 (85%) of our students engaged in digital lessons delivered by their regular classroom teacher. As a learning community, our priorities have been to empathize with the myriad of health, economic, and social-emotional strains which are being placed upon us, our community, city and country. We see our roles as educators to re-establish daily routines, structure, and provide appropriate outlets for students to express themselves academi-

cally and personally.

When school was canceled on March 13<sup>th</sup>, our minds filled with possibilities of ways to remain focused academically while being empathetic to the evolving impact of the Covid-19 crisis. Our students and our faculty have responded extremely well to the new learning platform, structures, schedules, and expectations put before them on March 31<sup>st</sup>. Reopening school with a completely different platform and mindset is rewarding and exhausting at the same time.

Overwhelmingly, teachers are highly motivated when they see their students' faces smiling back at them, albeit virtually. Teachers have utterly enjoyed the occasional "peeping" parent who couldn't help but get hooked by the lesson! When you peel back the challenges, there are layers

of opportunity, innovation, relevance, and connection. What other learning platform would make it so easy to host a "bring your parent to school day"!

Stay safe and healthy, Wolves! Apart, but together in a common bond of purpose, we will get through this!

Your Principal,

*Peggi Stewart*

### **From a Parent**

*"Dear Mr. Wallin,  
I just wanted you to know video chatting in 7<sup>th</sup> period is one of my child's threads to happiness. Please, please know that these kids need a silver lining and getting to hang out "virtually" with their classmates is doing that job."*

### **Comments from Teachers**

*"I was surprised at how many students were present and that they are excited to be back in class! It made me really happy because I miss them."*

*"This is a bit more daunting than I first imagined, but I know I am going to get the hang of it! "*

# Westside @ HOME: Some Things You Need to Know

## Grading Guidelines:

- The Cycle 5 Grading Period is extended to April 9<sup>th</sup>
- HISD has waived final exams and therefore grades for spring term will be based on Cycle 4, 5, and 6
- Teachers will enter one academic grade in Gradespeed each week



## HOW IS STUDENT ATTENDANCE DOCUMENTED?

Teachers are recording participation, engagement, and productivity in a variety of ways. A few examples include, but are not limited to the following:

- Posting a response during direct instruction
- Responding to a prompt
- Being present for live or recorded teacher lessons
- Live student check-in with teacher
- Answering discussion questions using embedded code within lesson

# HISD

**Parents!**

HISD's  
Social & Emotional  
Learning  
Department





is hosting  
"Coping for Parents"

Webinar  
TOMORROW  
Wednesday, April 8  
2:00 PM

Tips for parents to support their children and best practices for managing stress, emotions & anxiety.

Click: <https://bit.ly/39PKJKe>  
to join the conversation.

## THIS WEEK'S SCHEDULE

DAY	MONDAY, 4/6	TUESDAY, 4/7	WEDNESDAY, 4/8	THURSDAY, 4/9	FRIDAY
LESSON PATTERN	Periods 1,3,5,7 ONLY		Periods 2,4,6 ONLY		
Due Dates	Periods 1,3,5,7 academic work due on <b>Thursdays</b>		Periods 2,4,6 academic work due on <b>Mondays</b>		
DEAN HOURS	8:00-9:30 AM, 12:00-1:00 PM, and 3:00-4:00 PM To avoid overlap with teachers, Deans are available daily during these times (and by appt) to conduct live check-ins (course scheduling, student support, etc...). All students have been invited to TEAMS by their DEAN!				
9:30 - 12:00	Teacher-Directed Instruction <i>Intro to Learning Objective Instructional Process</i> Teacher-Student Engagement (Live/Recorded Lessons)	Supplemental Teacher Directed Instruction <i>Independent Student Practice</i> Performance Task Completion Progress Monitoring	Teacher-Directed Instruction <i>Intro to Learning Objective Instructional Process</i> Teacher-Student Engagement (Live/Recorded Lessons)	Supplemental Teacher Directed Instruction <i>Independent Student Practice</i> Performance Task Completion Progress Monitoring	GOOD FRIDAY HOLIDAY
	<u>Per 1- 9:30-10:30</u>	<u>Per 1- 9:30-10:30</u>	<u>Per 2- 9:30 - 10:30</u>	<u>Per 2- 9:30 - 10:30</u>	
	<u>Per 3- 11:00-12:00</u>	<u>Per 3- 11:00-12:00</u>	<u>Per 4- 11:00-12:00</u>	<u>Per 4- 11:00-12:00</u>	
Lessons recorded & saved for student viewing- anytime.	Tutorials/Reinforcement ongoing, student-teacher interaction	Lessons recorded & saved for student viewing- anytime.	Tutorials/Reinforcement ongoing, student-teacher interaction		
12:00-1:00	Daily Announcements  TEACHER LUNCH	Daily Announcements  TEACHER LUNCH	Daily Announcements  TEACHER LUNCH	Daily Announcements  TEACHER LUNCH	
1:00-3:00	<u>Per 5- 1:00- 2:00</u>	<u>Per 5- 1:00- 2:00</u>	<u>Per 6- 1:00 - 2:00</u>	<u>Per 6- 1:00 - 2:00</u>	
	<u>Per 7- 2:00- 3:00</u>	<u>Per 7- 2:00- 3:00</u>			

# Monthly Planner

<p>Normal Weekly Schedule Beginning April 13th</p>	Westside HS Student Virtual Daily Schedule Spring 2020				
	MONDAY	TUESDAY	WEDNESDAY	THURSDAY	FRIDAY
	Periods 1,3,5,7 ONLY		Periods 2,4,6 ONLY		Periods 1-7
	Periods 1,3,5,7 academic work due on <b>Thursdays</b>		Periods 2,4,6 academic work due on <b>Wednesdays</b>		Student Interventions Differentiated Support
	Teacher-Directed Instruction Intro to Learning Objective Instructional Process Teacher-Student Engagement (Live or Pre-recorded Lessons)	Supplemental Teacher Directed Instruction Independent Student Practice Performance Task Completion Progress Monitoring	Teacher-Directed Instruction Intro to Learning Objective Instructional Process Teacher-Student Engagement (Live or Pre-recorded Lessons)	Supplemental Teacher Directed Instruction Independent Student Practice Performance Task Completion Progress Monitoring	Student Supports
	9:30-12:00 Per 1- 9:30-10:30 Per 3- 11:00-12:00	Per 1- 9:30-10:30 Per 3- 11:00-12:00	Per 2- 9:30- 10:30 Per 4- 11:00-12:00	Per 2- 9:30 - 10:30 Per 4- 11:00-12:00	Special Populations: Co-Teach Support and Collaboration Social Emotional Referral/Support
	Lessons recorded & saved for student viewing- anytime.	More student-teacher interaction on this day	Lessons recorded & saved for student viewing- anytime.	More student-teacher interaction on this day	Teacher Supports PD/Training Peer Support Not work; Grading Practice
	12:00-1:00 LUNCH	LUNCH	LUNCH	LUNCH	LUNCH
	1:00-3:00 Per 5- 1:00- 2:00 Per 7- 2:00- 3:00	Per 5- 1:00- 2:00 Per 7- 2:00- 3:00	Per 6- 1:00 - 2:00	Per 6- 1:00 - 2:00	TEACHER MEETING
	3:00-3:30 Troubleshooting/ Parent Student Contact/Dean Referral	Troubleshooting/ Parent Student Contact/Dean Referral	2:00 PM on WED & THURS TEACHER MEETINGS/ TECH TRAINING AND/OR SUPPORT UPON REQUEST		Teacher Lesson Plans posted for following week.

<p>Daily Classes at a Glance Thru May 8</p>	Monday, 4/6 1,3,5,7	Tuesday, 4/7 1,3,5,7	Wednesday, 4/8 2,4,6	Thursday, 4/9 2,4,6 <b>(LAST DAY CYCLE 5)</b>	Friday, 4/10 Good Friday Holiday
	Monday, 4/13 1,3,5,7 <b>(FIRST DAY CYCLE 6)</b>	Tuesday, 4/14 1,3,5,7	Wednesday, 4/15 2,4,6	Thursday, 4/16 2,4,6	Friday, 4/17 Pds 1-7 Flexible Supports
	Monday, 4/20 1,3,5,7	Tuesday, 4/21 1,3,5,7	Wednesday, 4/22 2,4,6	Thursday, 4/23 2,4,6	Friday, 4/24 Pds 1-7 Flexible Supports
	Monday, 4/27 1,3,5,7	Tuesday, 4/28 1,3,5,7	Wednesday, 4/29 2,4,6	Thursday, 4/30 2,4,6	Friday, 5/1 Pds 1-7 Flexible Supports
	Monday, 5/4 1,3,5,7	Tuesday, 5/5 1,3,5,7	Wednesday, 5/6 2,4,6	Thursday, 5/7 2,4,6	Friday, 5/8 Pds 1-7 Flexible Supports

No Virtual School on Friday  
April 10  
Spring Holiday!



## Stay Connected!

During these challenging times of students learning from home, it is important to stay connected. Please be proactive in keeping up to date on the information you need. Things change rapidly so you will need to be vigilant.

**Are you subscribed to the eNews?** The Wolf eNews contains valuable announcements and school news. Click [here](#) to subscribe and get it delivered to your email inbox.

**Are you signed up to use Grade Speed?** Parents and students can stay on top of grades and assignments. Click [here](#) to register.

**Are you still trying to get connected?** If you have questions or concerns, students and parents may [email their teachers/dean](#). If students are still confused about online access or do not know where to begin, they may contact Ms. Merriweather, our Curriculum Instructional Technologist, at [ameriwe@houstonisd.org](mailto:ameriwe@houstonisd.org).



Seek out reliable information to stay on top of the latest updates and details. Now is a great time to follow *trusted* social media resources and sign-up for notifications from official entities. Do not rely on word of mouth nor internet rumors.

### SEEK OUT RELIABLE INFORMATION TO STAY UPDATED

#### Houston Independent School District

Main Website: [www.houstonisd.org](http://www.houstonisd.org)

HISD/Covid-19 Alerts: [www.houstonisd.org/HealthAlerts](http://www.houstonisd.org/HealthAlerts)

Twitter: @HoustonISD

Instagram: houstontxisd

FaceBook: Houston Independent School District

#### City of Houston

Main website: [www.houstontx.gov](http://www.houstontx.gov)

Covid-19 Updates: <https://houstonemergency.org/covid19>

Twitter: @HoustonTX

#### Westside High School

Main Website: [www.westsidewolves.org](http://www.westsidewolves.org)

Twitter: @westsidehigh

Instagram: gowestsidewolves

Facebook: Westside High School

#### Harris County

Main Website: [www.harriscountytexas.gov](http://www.harriscountytexas.gov)

Covid-19: <https://publichealth.harriscountytexas.gov/Resources/2019-Novel-Coronavirus>

Twitter: @ReadyHarris



## Westside Cheerleaders Send To Staff



## Socially Distanced Tech Deployment

Last week, Westside students in need of laptops, chargers and hotspots participated in a drive-thru pick up service. Mr. Hoang, with assistance from Mr. Green and Mr. Jiminez, distributed 100 units of equipment to get our Wolves into their virtual classrooms.

If students have issues with broken screens/chargers, or if they need assistance with Microsoft Teams or Google Classroom, they may contact Mr.



Hoang at [THOANG3@houstonisd.org](mailto:THOANG3@houstonisd.org) . Please note supplies are limited.



## NEWS

### HISD Relaunches Food Distribution Efforts

Today, HISD resumes its food distribution program in partnership with the Houston Food Bank. A new streamlined process has been implemented to increase safety for families and staffers, including social distancing. Click [here](#) for schedule and sites. Five hundred boxes will be distributed at each site.



### Go “Blu”! Westside Senior a Class Act



Westside senior, Vankey “Blu” Burks, was featured last week on CW39 Houston as their “Class Acts” student of the week award recipient. Click [here](#) to view Blu’s unique story on CW 39, including her strength in overcoming obstacles to achieve her dreams. Don’t miss this Blu’s inspiring interview and comments by Coach Gillespie and Ms. Schrynemeeckers.



## NEWS

### Wolf Band Creates Pictorial History



To commemorate the school's 20th Anniversary this year, the Westside Band revealed their new Gallery Wall, capturing 20 years of Wolf Band history. To view all of the photos, go to the [Westside Wolf Band Facebook Page](#).

### Grocery Gift Cards Available for Wolves in Need



Students in need of assistance with groceries may contact a staff member below to request a \$25 grocery store gift card:

Ms. McIntosh: [Ciera.McIntosh@houstonisd.org](mailto:Ciera.McIntosh@houstonisd.org)

Ms. Lumpkin: [Ebony.Lumpkin@houstonisd.org](mailto:Ebony.Lumpkin@houstonisd.org)

Dean Edith Gozalez: [EGonza15@houstonisd.org](mailto:EGonza15@houstonisd.org)

Ms. Byrd-Williams: [cbyrd@houstonisd.org](mailto:cbyrd@houstonisd.org)

Mr. Scott: [Aaren.Scott@houstonisd.org](mailto:Aaren.Scott@houstonisd.org)



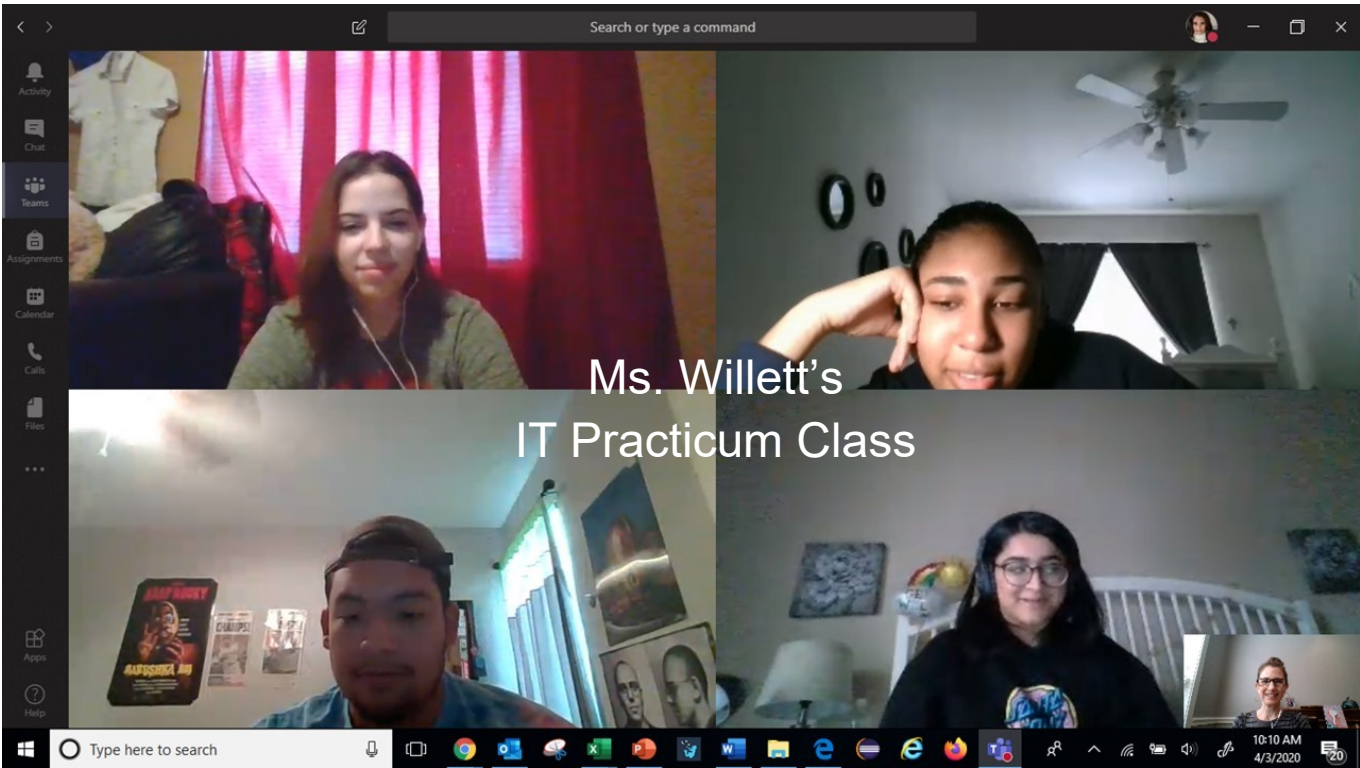
## Funny Hat Day



**Virtual Spirit Week**  
**Tuesday**  
 Family Member/Pet on Camera  
**Wednesday**  
 Sit Outdoors Day  
**Thursday**  
 Throwback: Wear a school tee!



# The New Way We Do School

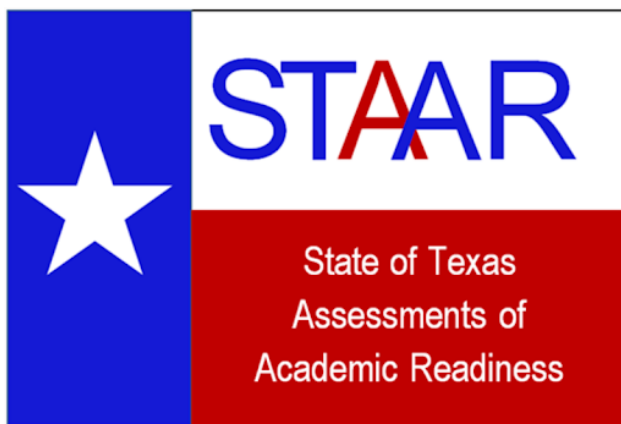


**Ms. Steward's AP Human Geography students fill out 2020 Census with their parents for Extra Credit**



## STAAR Testing Cancelled

Due to the impact of Covid-19, STAAR testing is cancelled for the remainder of the school year. This includes all STAAR Assessments and EOC (End of Course) Assessments. Click [here](#) for the announcement released by the Texas Education Agency (TEA).



## Attention Juniors! School Day SAT Postponed

HISD has announced that the administration of the SAT School Day test planned for April 28, 2020 is rescheduled for October 14, 2020. Our class of current juniors will sit for the test in October when they are seniors.

It is important to note, juniors are advised to sign up for the June or August 2020 SAT if they wish to meet early action/early decision college application deadlines for Fall of 2021 admissions.

## National Testing Updates ACT, AP, and SAT

# ACT<sup>®</sup>

**COVID-19**

**TEST UPDATES &  
STUDENT RESOURCES**

Click here:

<http://www.act.org/>



**COVID-19**

**INFO &  
RESOURCES**

Click Here:

<https://apcentral.collegeboard.org/about-ap/news-changes/coronavirus-update>



**CollegeBoard SAT**  
connect to college success<sup>™</sup>

COVID-19

**SAT UPDATES**

Click Here:

<https://pages.collegeboard.org/natural-disasters>



## National Assistant Principals Week



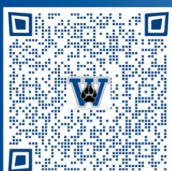
Thank you to our fantastic Dean Team, Associate Principal Davis, and Dean of Instruction, Ms. Mishlan!

*Wolves Helping Wolves*

**SOME OF OUR FAMILIES  
ARE IN NEED**

Make a donation toward  
**GROCERY GIFT CARDS**

Scan or Click [HERE](#)



*Westside PTO*

**Cycle 5**  
Is  
**EXTENDED**  
To  
**April 9**

## Resources You May Need

Need to talk?

Do you want emotional support?



EMAIL YOUR  
NAME AND  
ID NUMBER  
**ONLY**

One of us (Ms. McIntosh or Ms. Lumpkin) will create an appointment with you. Check your notification via **school** email within 24 hours.

Email:

[ciera.mcintosh@houstonisd.org](mailto:ciera.mcintosh@houstonisd.org)

Email:

[ebony.lumpkin@houstonisd.org](mailto:ebony.lumpkin@houstonisd.org)



**WESTSIDE**  
Student Support Center



**Here to assist our Wolves!**

Attendance Appeal

Absences

Emotional Support

**Monday-Friday 9-12 & 1-3:15**

[cbyrd@houstonisd.org](mailto:cbyrd@houstonisd.org)

[aaren.scott@houstonisd.org](mailto:aaren.scott@houstonisd.org)

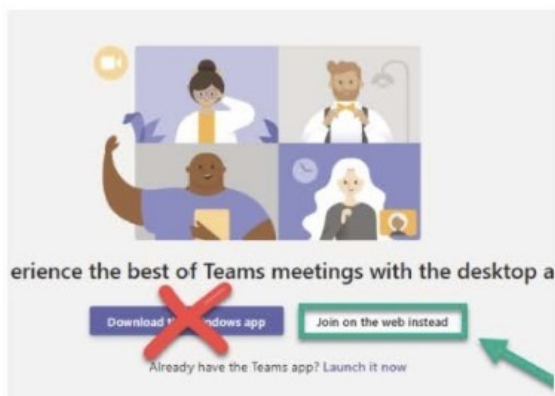
**TAKE  
CARE OF  
YOURSELVES,  
WOLVES!**





## Resources You May Need

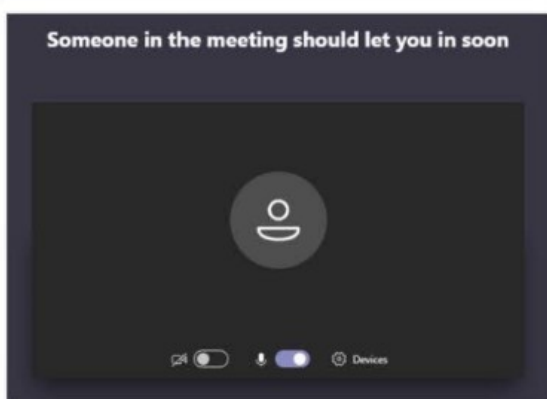
### Joining Microsoft Teams Meeting as a Student/Parent



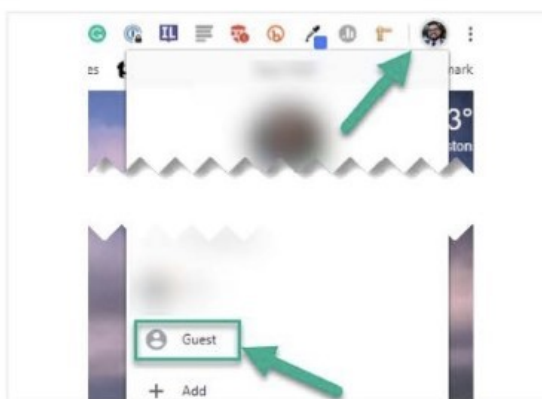
- 1 Click on the Invite link. In your browser window click on "Join on the web instead". NOTE: For the best experience use Google Chrome



- 2 Enter your name. Turn on your camera and mic if necessary. Note: Your browser may ask permission to use your mic and camera.



- 3 Wait to be let in to the meeting



- 4 NOTE: If you receive an error try opening Chrome as a guest. Then copy and paste the link from your invite into the browser URL

## Announcements



*No Virtual School  
On Friday, April 10  
Spring Holiday!*

Students!  
Check your HISD Student Email Regularly



**CLASS  
OF 2020**

*We know you have  
questions & concerns!*

**SEND YOUR QUESTIONS TO  
THE SENIOR CLASS REMIND**

**TO JOIN:**

**TEXT @2020WOLF1 TO 81010**

**NO PARENTS PLEASE...SAFE SPACE FOR STUDENTS**

Westside High School



Home  
Of the  
Wolves



## Announcements



Comcast Announces  
Comprehensive  
COVID-19 Response  
to  
Help Keep Americans  
Connected to the Internet

Free Wifi from Comcast:  
<https://corporate.comcast.com/covid-19>

From Our  
Westside Counselor:

Social Emotional Guide  
for  
Parents and Teachers

Resources for Parents, Educators  
& School Communities  
Related to COVID-19

<https://insidesel.com/2020/03/12/covid-19/>



THE 20TH  
EDITION  
OF THE  
WESTSIDE  
CANIDAE

YEAR  
BOOK

[www.balfour.com](http://www.balfour.com)

&

Yes, we will have a  
YEARBOOK!

**\$85**

Questions?

[srobert2@houstonisd.org](mailto:srobert2@houstonisd.org)



**Celebrating  
20 Years  
Of  
Excellence  
Est. 2000**

## Quick Links

Submit stories and photos for eNews:

[barbara.nassab@houstonisd.org](mailto:barbara.nassab@houstonisd.org)

Register for Parent Student Connect/  
GradeSpeed:

<https://www.houstonisd.org/Page/42143>

Subscribe to receive eNews by email:

[https://mailman.listserve.com/listmanager/  
listinfo/whscommunity](https://mailman.listserve.com/listmanager/listinfo/whscommunity)

School Pay:

<https://www.schoolpay.com/>

School Web Address:

<https://www.houstonisd.org/westsidehs>

HISD Web Address:

<https://www.houstonisd.org>